

Colt CHA/WP 524-P PS/CT/PB/MN/NS

Specifications

Marka	Colt
Typ	CHA/WP 524-P PS/CT/PB/MN/NS
Typ produktu	Air Cooled Chiller
Ogólna wydajność w kW	140,0
Ogólna wydajność w	39,8
Tonaż	
Czynnik chłodzący	Freon
Typ czynnika chłodzącego	R407C
Liquid buffer tank	✓
Pump	✓
Waga kg.	1240
Rozmiary	3550x1150x2350 mm (LxWxH)
Compressor(s) type & model	4x Copeland ZR16M3E-TWD-551
Display	ECH 400
Number of fans	3
Stock	1



Description

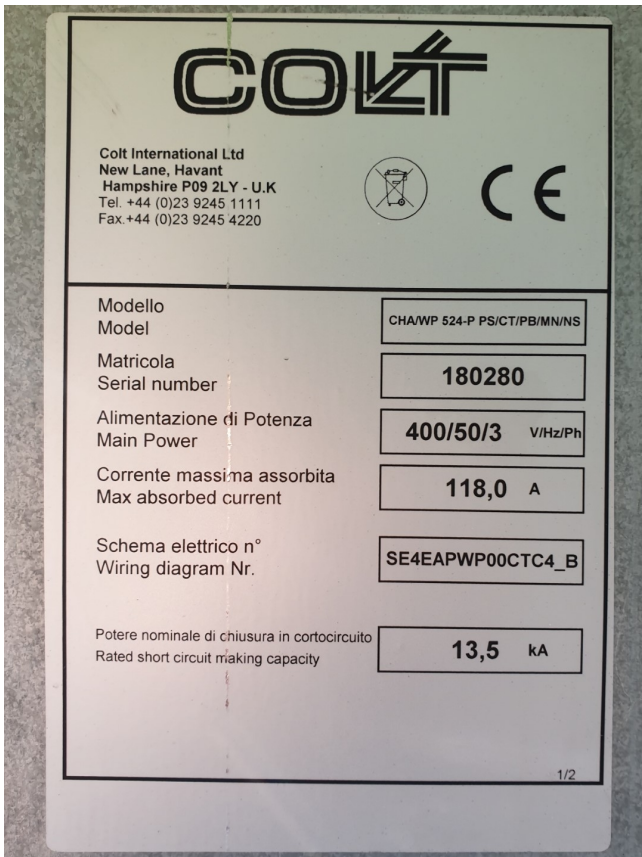
Used Colt CHA/WP 524-P PS/CT/PB/MN/NS

Used Colt CHA/WP 524-P PS/CT/PB/MN/NS air cooled chiller. Complete with 4 Copeland ZR16M3E-TWD-551 scroll compressors, plate heat exchanger as evaporator, condenser with 3 fans 50 Hz - 920 RPM and a total airflow of 42.120 m³/h, 2 Frigo Mec RV-155X422 liquid receivers, 2 suction accumulators, Varem expansion vessel with a capacity of 19 liters, Jansen SHC20-126/1.5_80-T/A-E/R-2-IE3 pump, liquid line filter driers and a ECH 400 display.

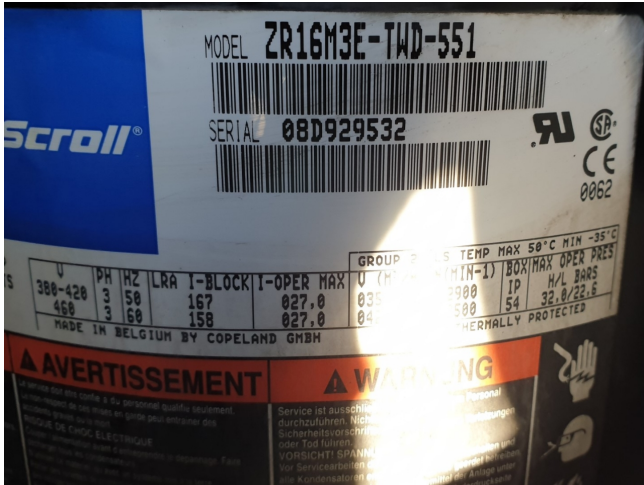
*All components of this used chiller will be tested on good working, leak free condition (condensing blocks), compressors, fans, control panel, etcetera). Choosing HOSBV means buying with warranty. We perform a industrial cleaning and rust spots will be covered. Also, we can arrange your

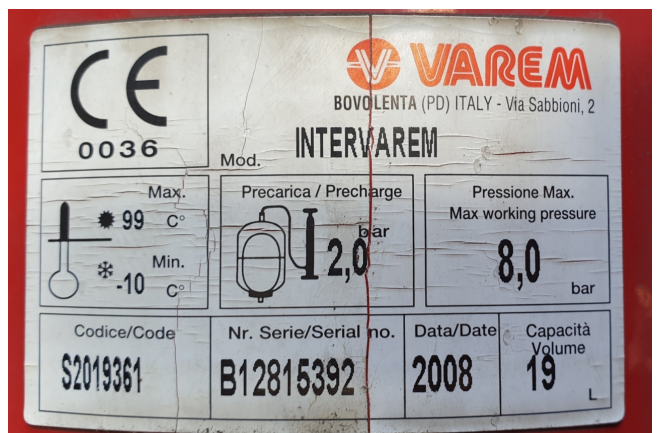


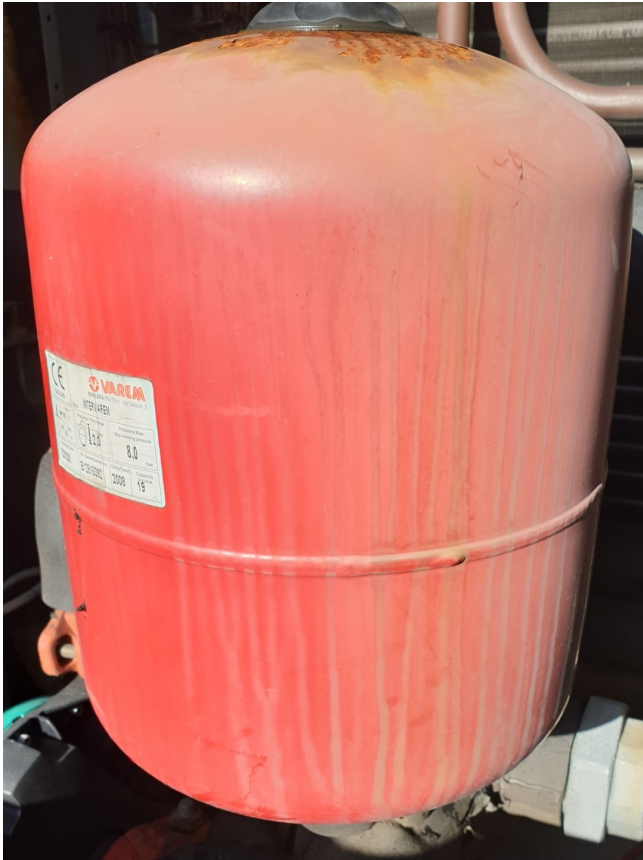
shipment.











Jansen		+31(0)485-371318	
		www.pompechtechniek.nl	
 POMPEN- & WATERTECHNIEK	Order nr.		7464
	29-03-2018		
Type: SHC20-126/1,5 80-T/A-E/R-2-IE3			
Artikel nr.: 0330.0021		s.n.: 18746401	
Qmax: 35 m³/h		Hmax: 21 mwk	
Ph: 3	230/400V	50Hz	Inom: 5,5/3,2 A
P2: 1,5 kW	n1: 2900 rpm	Iso kl.: F	IP55

